

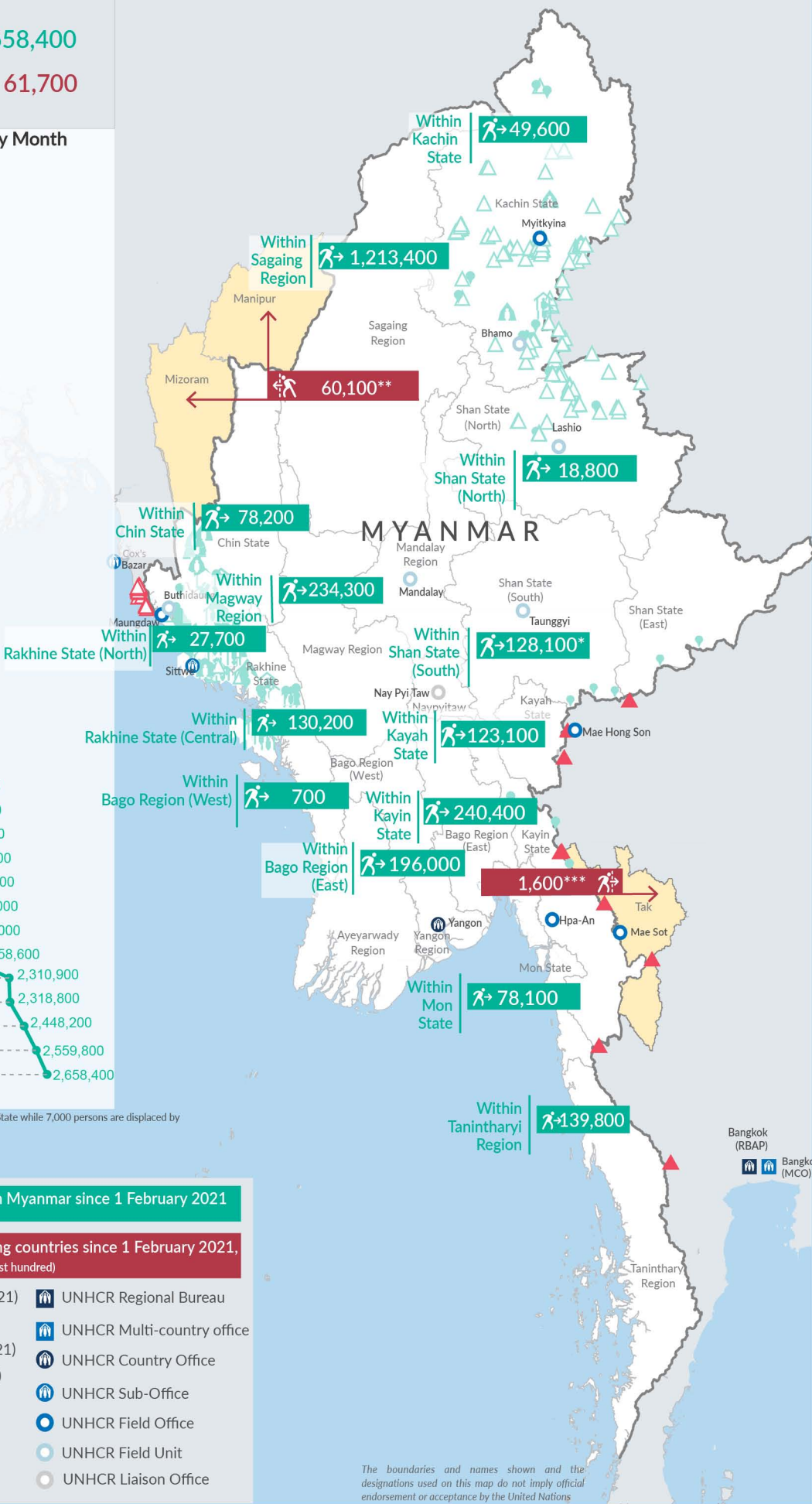
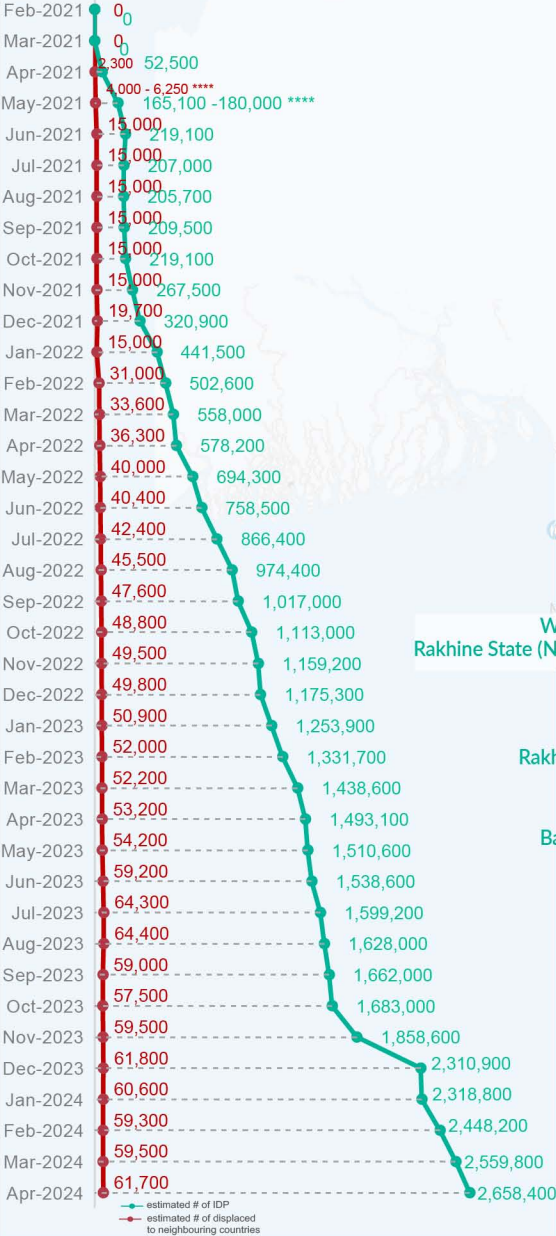
Key figures

Estimated # of IDPs → 2,658,400

Estimated # of displaced to neighbouring countries → 61,700

Source : UN in Myanmar

Estimated displacement figures by Month



*121,100 persons are displaced by armed conflict in neighbouring Kayah State while 7,000 persons are displaced by inter-EAO conflict between SSPP and RCSS.

**UN Estimates

***Estimates by Tak Border Command Center (TBCC)

****Range of figures was used while data collection was in progress.


Estimated internal displacement within Myanmar since 1 February 2021 (rounded to the nearest hundred)

Estimated displacement to neighbouring countries since 1 February 2021, who remain displaced (rounded to the nearest hundred)

- IDP unplanned settlement (pre-1 Feb 2021)
- IDP Center (pre-1 Feb 2021)
- IDP spontaneous location (pre-1 Feb 2021)
- IDP planned settlement (pre-1 Feb 2021)
- Temporary shelter for displaced people from Myanmar
- Refugee, planned settlement
- States/Provinces with new arrivals
- International boundaries
- UNHCR Regional Bureau
- UNHCR Multi-country office
- UNHCR Country Office
- UNHCR Sub-Office
- UNHCR Field Office
- UNHCR Field Unit
- UNHCR Liaison Office

The boundaries and names shown and the designations used on this map do not imply official endorsement or acceptance by the United Nations

Key figures


2,947,400

Estimated total IDPs within Myanmar

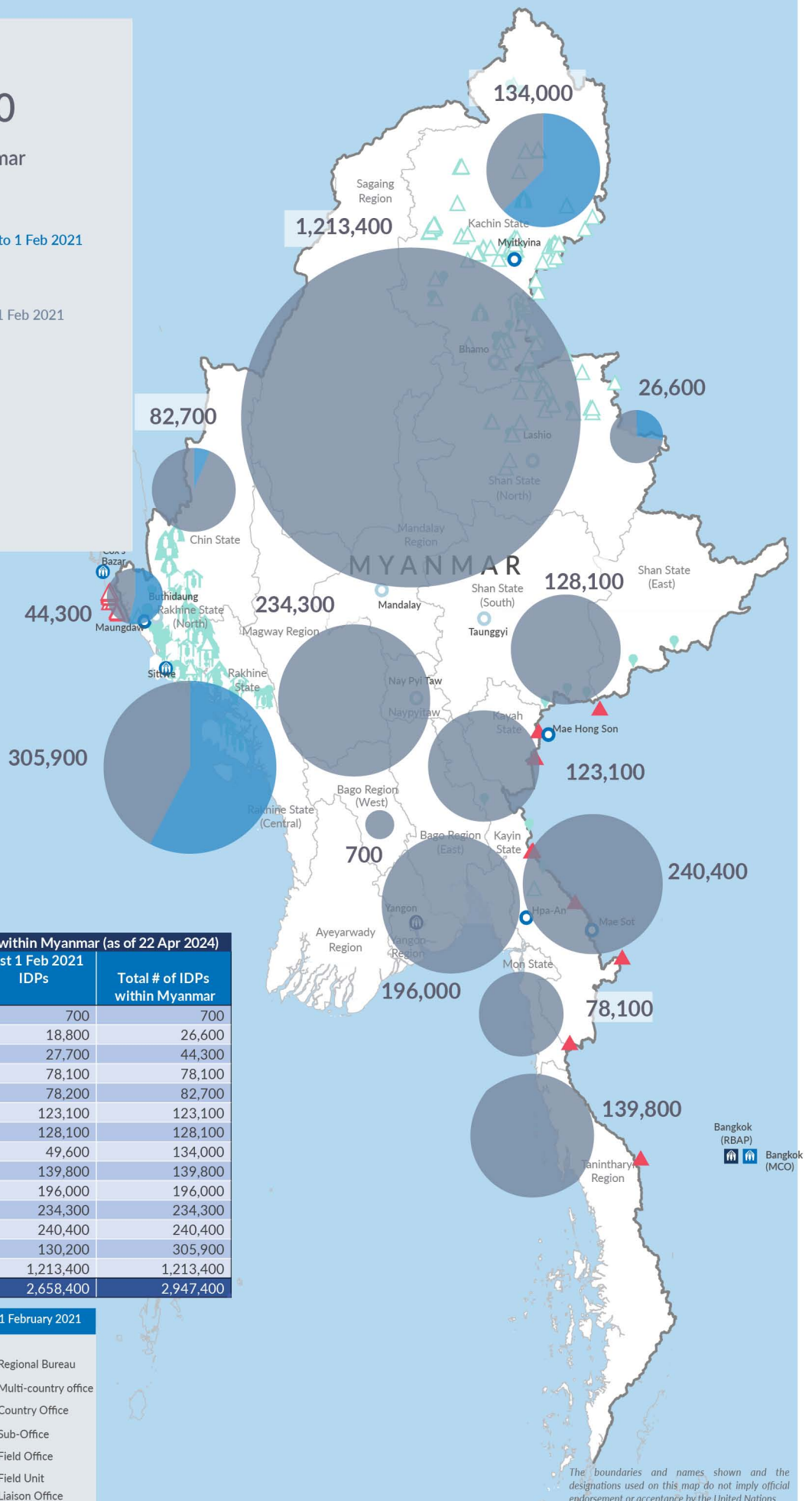

289,000
 Estimated # of IDPs displaced prior to 1 Feb 2021
 (As of 31 Dec, 2023)


2,658,400
 Estimated # of IDPs displaced post 1 Feb 2021
 (As of 22 Apr, 2024)


 Prior to 1 Feb 2021


 Post 1 Feb 2021

Source : UN in Myanmar


Estimated total internally displaced person (IDPs) within Myanmar (as of 22 Apr 2024)

State/Region	Prior to 1 Feb 2021 IDPs	Post 1 Feb 2021 IDPs	Total # of IDPs within Myanmar
Bago Region (West)	-	700	700
Shan State (North)	7,800	18,800	26,600
Rakhine State (North)	16,600	27,700	44,300
Mon State	-	78,100	78,100
Chin State	4,500	78,200	82,700
Kayah State	-	123,100	123,100
Shan State (South)	-	128,100	128,100
Kachin State	84,400	49,600	134,000
Tanintharyi Region	-	139,800	139,800
Bago Region (East)	-	196,000	196,000
Magway Region	-	234,300	234,300
Kayin State	-	240,400	240,400
Rakhine State (Central)	175,700	130,200	305,900
Sagaing Region	-	1,213,400	1,213,400
Grand Total	289,000	2,658,400	2,947,400

Estimated internal displacement within Myanmar Pre+Post 1 February 2021 (rounded to the nearest hundred)

-  IDP unplanned settlement (pre-1 Feb 2021)
-  IDP Center (pre-1 Feb 2021)
-  IDP spontaneous location (pre-1 Feb 2021)
-  IDP planned settlement (pre-1 Feb 2021)
-  Temporary shelter for displaced people from Myanmar
-  Refugee, planned settlement
-  International boundaries
-  UNHCR Regional Bureau
-  UNHCR Multi-country office
-  UNHCR Country Office
-  UNHCR Sub-Office
-  UNHCR Field Office
-  UNHCR Field Unit
-  UNHCR Liaison Office

The boundaries and names shown and the designations used on this map do not imply official endorsement or acceptance by the United Nations