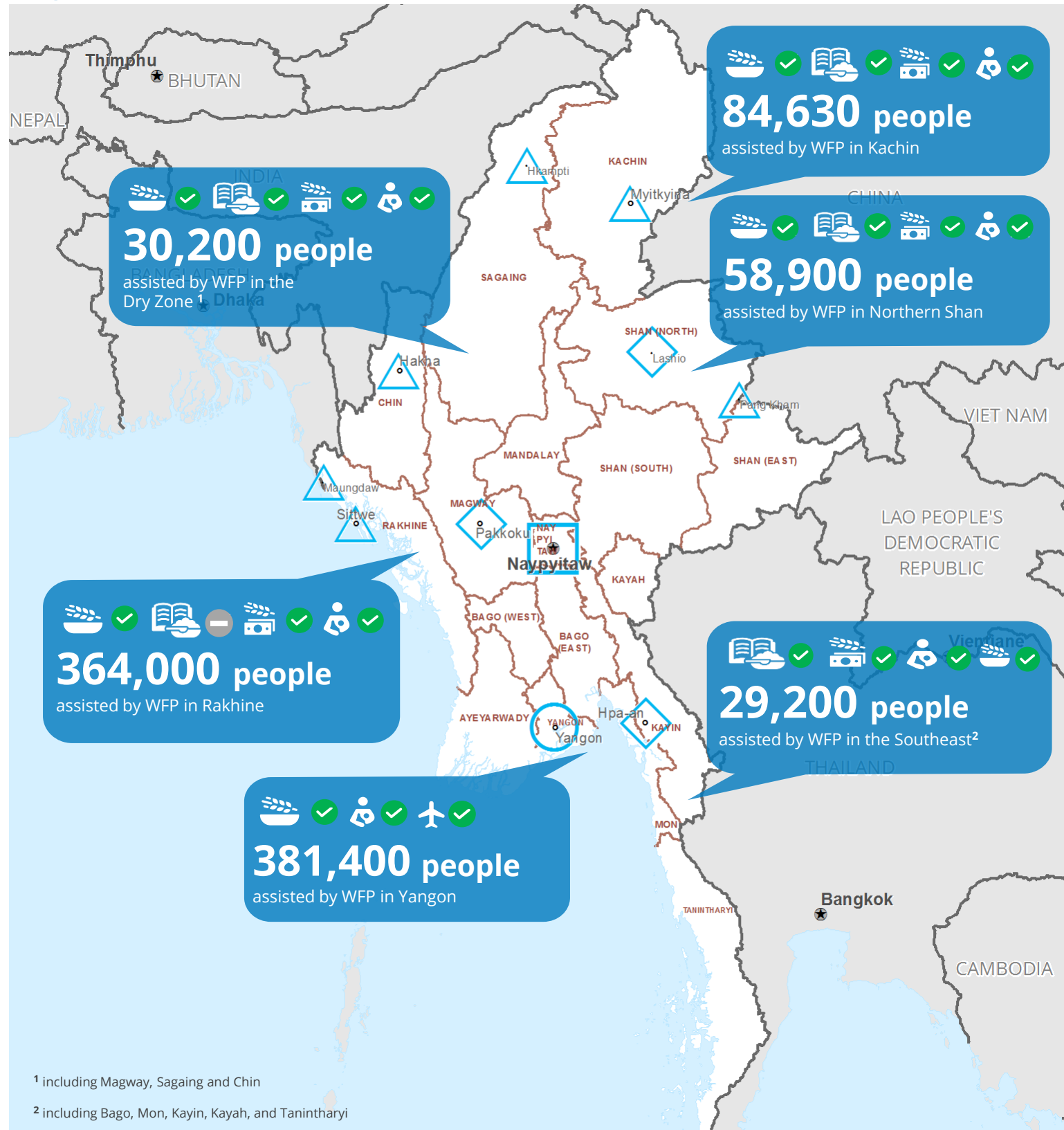


# Myanmar

Emergency Dashboard | January 2022



<sup>1</sup> including Magway, Sagaing and Chin

<sup>2</sup> including Bago, Mon, Kayin, Kayah, and Tanintharyi

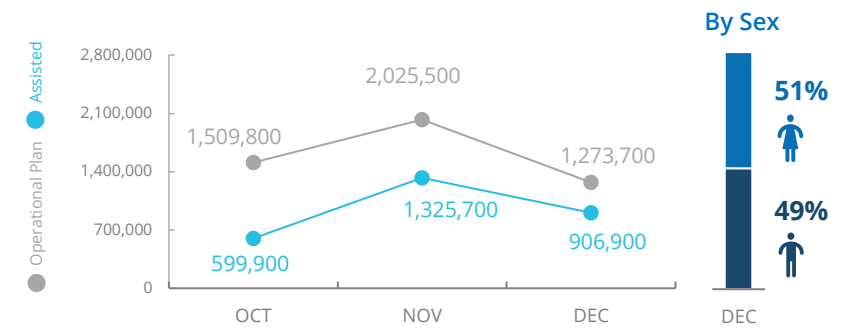
- Country Office
- Area Office
- Sub Country Office
- Field Office
- National Capital
- Major Town
- Intermediate Town
- Small Town
- International Boundary
- Provincial Boundary
- River
- Surface Waterbody
- General Food Distribution
- School Feeding
- Livelihoods
- Nutrition
- WFP Humanitarian Flight Services
- ✔ Ongoing
- ! Partially Suspended
- ✘ Suspended
- Not Active

Data sources: WFP, UNGIWG, GAUL, OCHA.

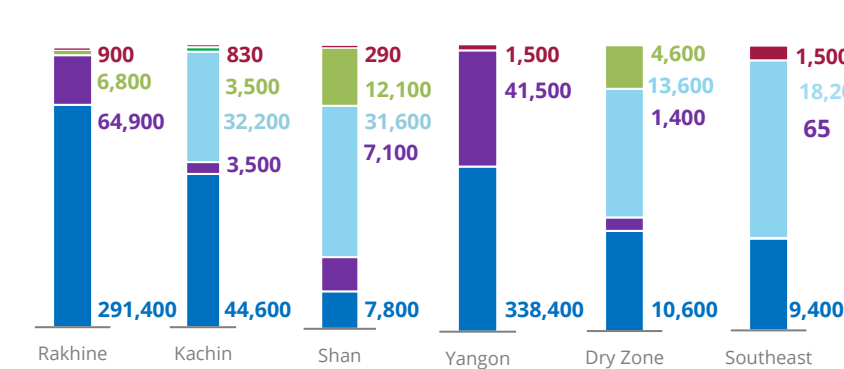
The designations employed and the presentation of material in the map do not imply the expression of any opinion on the part of WFP concerning the legal or constitutional status of any country, territory, city or sea, or concerning the delimitation of its frontiers.

© World Food Programme 2022

## PEOPLE ASSISTED Myanmar Country Strategic Plan



## OPERATIONAL PROFILE By Activity - December 2021



## FUNDING

Net funding requirements (6 months - US\$)  
February - July 2022

Myanmar Country Strategic Plan (CSP)

**US\$108m**

Emergency Relief Assistance

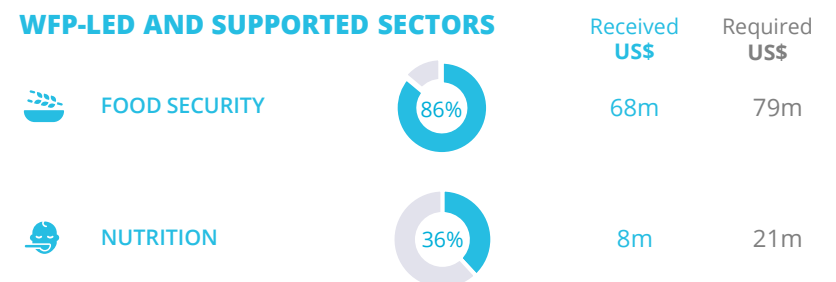
**US\$60m**

2021 Humanitarian Response Plan  
January - December 2021



Contributions: US\$212m  
Requirements: US\$276m

## WFP-LED AND SUPPORTED SECTORS



## WFP LEVEL 2 EMERGENCY SINCE 10 MAY 2018

For more information, see the **COUNTRY BRIEF**



Myanmar Country Strategic Plan (2018-2022)

