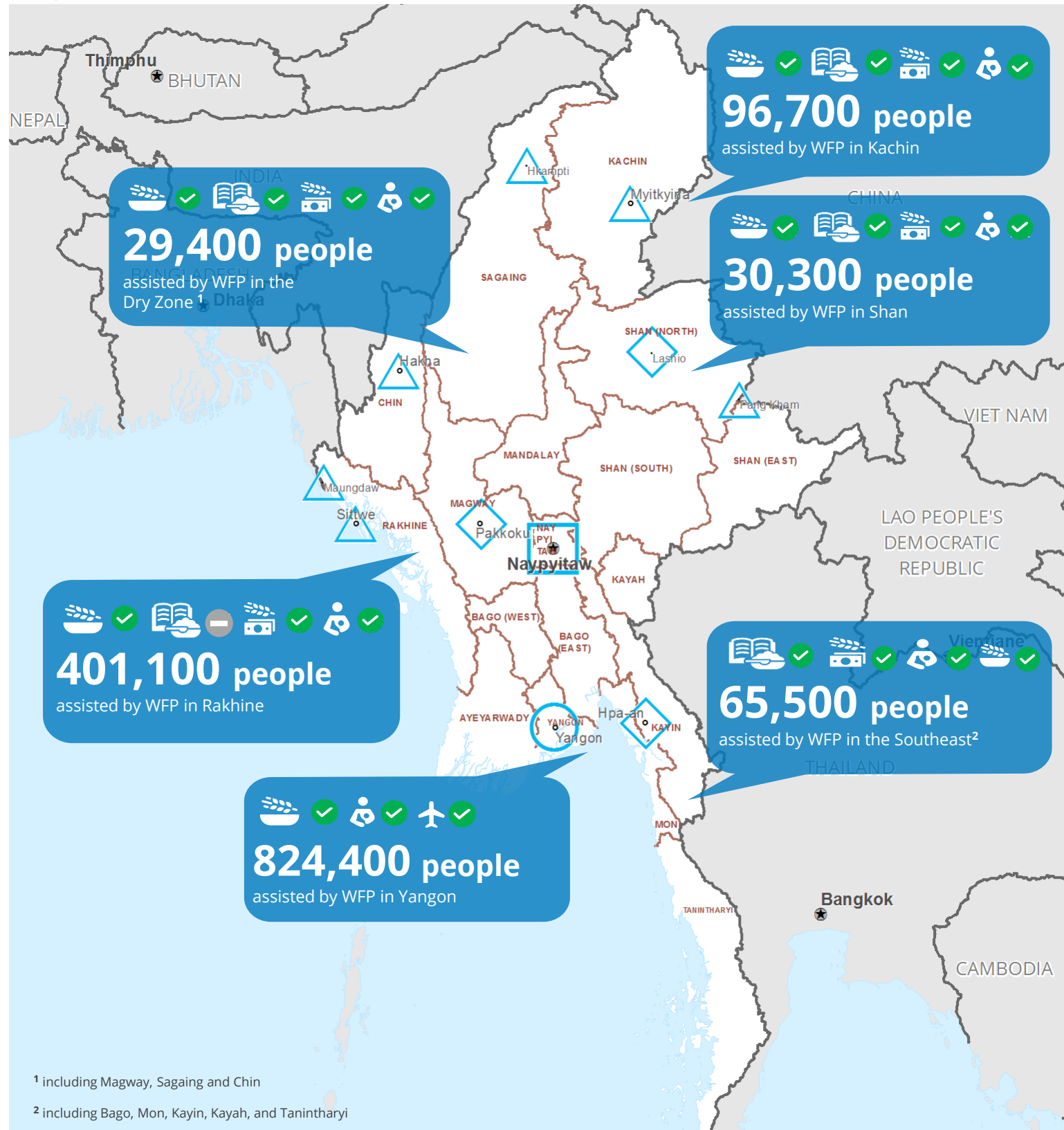


Myanmar



¹ including Magway, Sagaing and Chin

² including Bago, Mon, Kayin, Kayah, and Tanintharyi

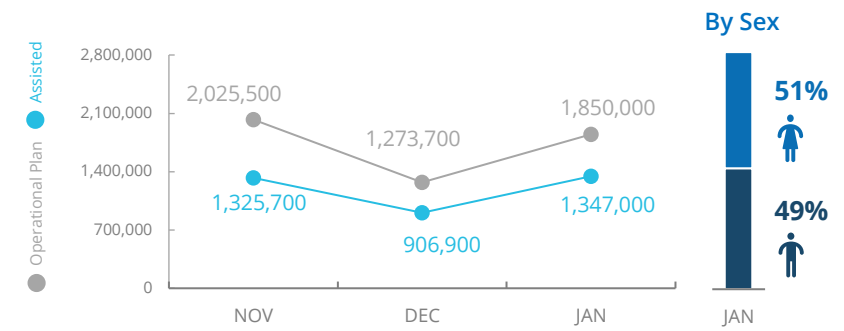
- Country Office
- Area Office
- Sub Country Office
- Field Office
- National Capital
- Major Town
- Intermediate Town
- Small Town
- International Boundary
- Provincial Boundary
- River
- Surface Waterbody
- General Food Distribution
- School Feeding
- Livelihoods
- Nutrition
- WFP Humanitarian Flight Services
- ✔ Ongoing
- ! Partially Suspended
- ✘ Suspended
- Not Active

Data sources: WFP, UNGIWG, GAUL, OCHA.

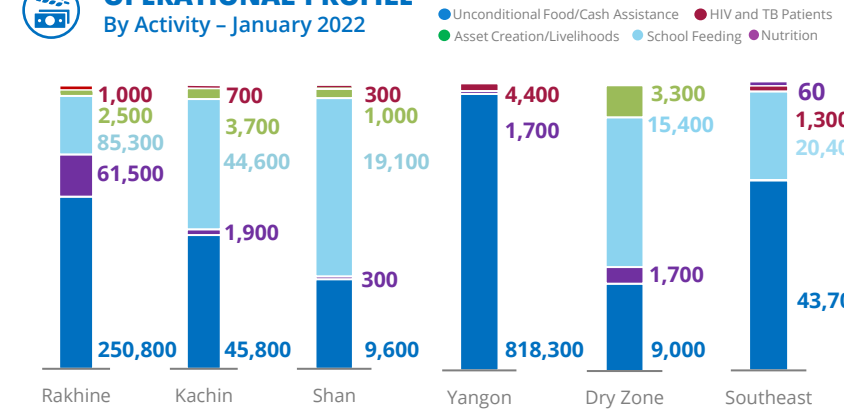
The designations employed and the presentation of material in the map do not imply the expression of any opinion on the part of WFP concerning the legal or constitutional status of any country, territory, city or sea, or concerning the delimitation of its frontiers.

© World Food Programme 2022

PEOPLE ASSISTED Myanmar Country Strategic Plan



OPERATIONAL PROFILE By Activity - January 2022



FUNDING

Net funding requirements (6 months - US\$)
March - August 2022

Myanmar Country Strategic Plan (CSP)

US\$113m

Emergency Relief Assistance

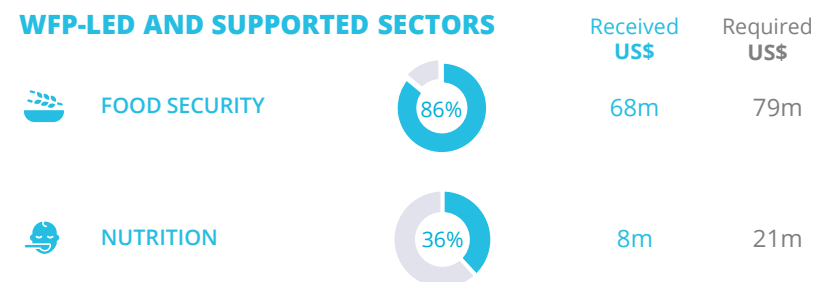
US\$41m

2021 Humanitarian Response Plan
January - December 2021



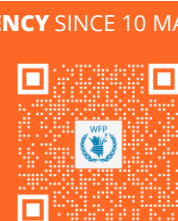
Contributions: US\$212m
Requirements: US\$276.5m

WFP-LED AND SUPPORTED SECTORS



WFP LEVEL 2 EMERGENCY SINCE 10 MAY 2018

For more information, see the **COUNTRY BRIEF**



Myanmar Country Strategic Plan (2018-2022)

